



# AI in Apprenticeships:

---

Enhancing Learning and  
Assessment

**Ros Protheroe**

Training Director, Panda Education & Training Ltd

Today...

How  
could  
we  
use  
AI to

Streamline assessment

Boost Productivity

Enhance Teaching and Learning



About us:

slido



How confident are you in  
AI's role in education?

① Start presenting to display the poll results on this slide.

# Definitions:

## AI (Artificial Intelligence):

- AI is technology that helps computers think and learn like humans to solve problems and make decisions.

## Generative AI

- *Generative AI* creates new content, like text, images, or music, based on what it has learned from existing data.

# Examples:

## AI (Artificial Intelligence):

- **Chatbots** – Answering learner questions on a provider’s website
- **Recommendation Systems** – Suggesting courses based on learner’s interests (eg on social media)
- **Speech-to-Text** – Converting lectures into written notes.
- **Automated Marking** – Grading multiple-choice quizzes instantly

## Generative AI

- **Lesson Planning** – Creating customised lesson plans for different learning levels.
- **AI Writing Assistants** – Helping learners improve written work by suggesting better wording.
- **AI Image Generation** – Making educational visuals or diagrams.
- **Simulation & Roleplay** – Creating realistic scenarios for students to practice skills.

# WHY?

- Boost Productivity – Idea generation, data analysis and summation, repetitive tasks
- Streamline Assessment-check for consistency, highlight gaps, suggest feedback areas
- Enhance Learning – gives learners another tool that can help support and challenge their own thoughts
- Training learners for a world of work with AI

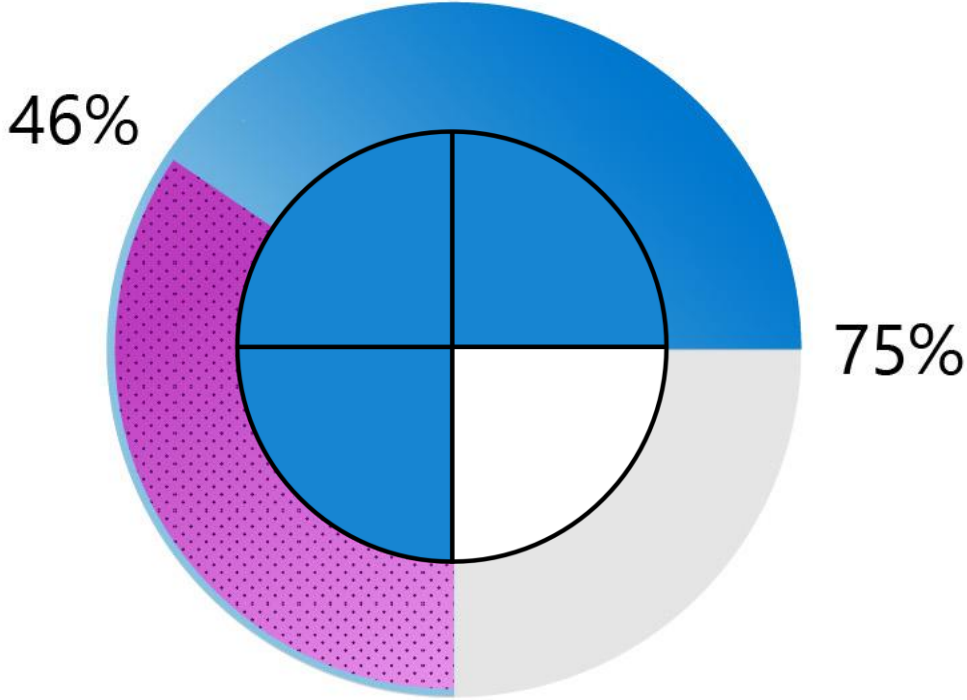


# Three Out of Four People Use AI at Work

Usage nearly doubled in the last six months.

75% of people are  
already using AI at work

46% of them started using  
it less than 6 months ago





**66%** of leaders say they wouldn't hire someone without AI skills

**71%** say they'd rather hire a less experienced candidate with AI skills than a more experienced candidate without them

## Why does AI matter for us in WBL?

- The world of education is evolving – AI is already shaping learning and assessment.
- The world of work is evolving – shaping many industries and workplace practices
- AI can streamline assessments, save time, and personalise learning.
- We must equip assessors and learners with AI knowledge and strategies.

How can it help  
us?



# Boosts Productivity

- Idea generation
- Content generation-activities, workbooks, induction planning
- Analysis and summation, - summarise long papers, ask questions
- Transcribing–Summarise meetings, verbal discussions, professional discussions from audio/video



# Small Group Task

---

- 🗣️ *"Imagine an assessor has to mark 30 portfolios, provide feedback, track progress, and still have time for teaching and coaching. AI can change this workflow—how?"*
- Discuss in small groups and share your thoughts



# Streamline Assessment

Marking assistance-highlight key themes, check for consistency, highlight gaps,

Automating feedback (first draft) - suggest feedback areas

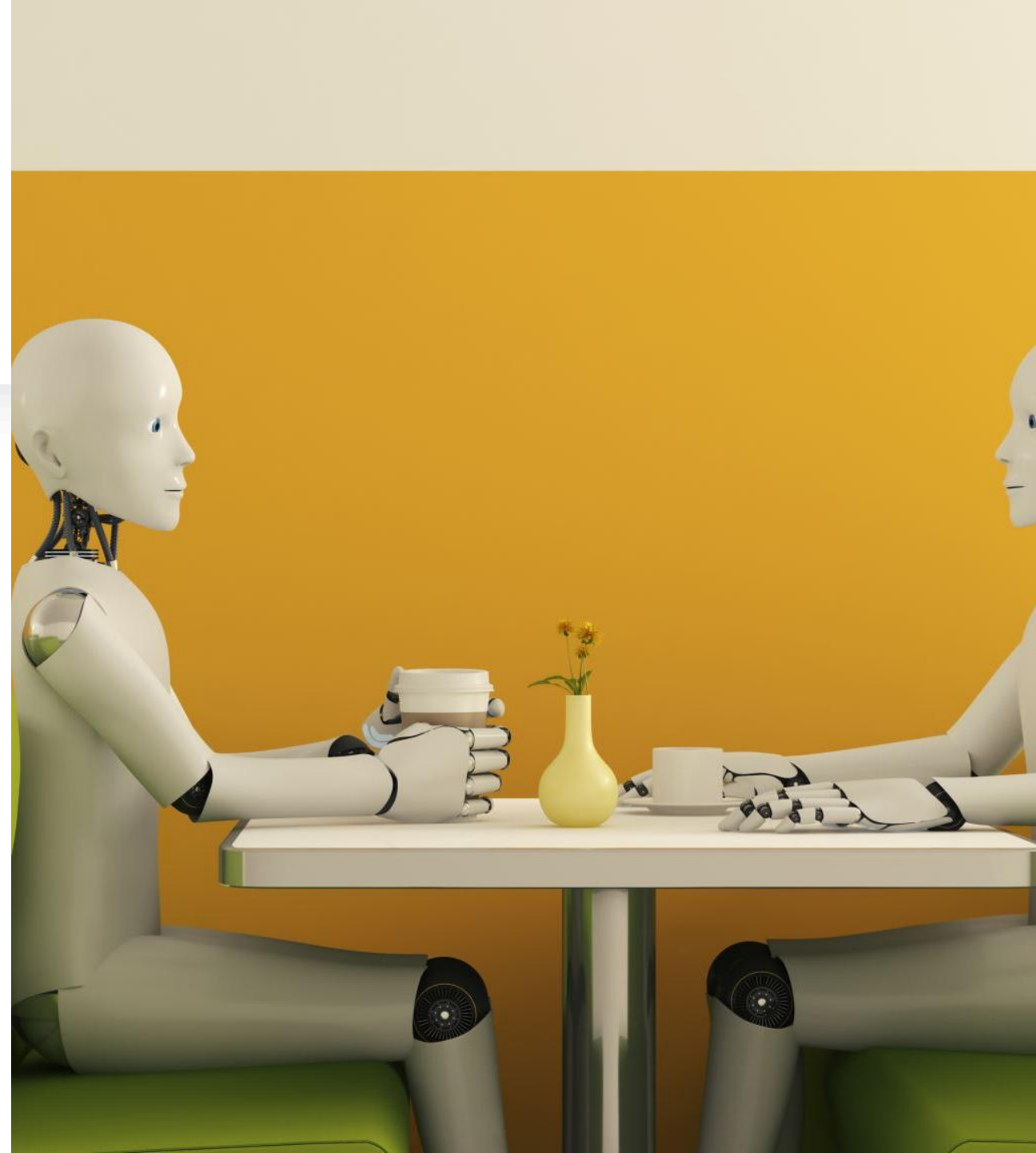
Create assessments based on given criteria

**Sssshhhh....  
there's an  
elephant in  
the room!**




# Enhance Learning

- Gives learners another tool that can help support and challenge their own thoughts. Encourages critical thinking
- **AI-Generated Study Resources**
- Suggest **writing structure improvements, vocabulary enhancements, and grammar corrections**
- **AI-Powered Chatbots for Instant Support**
- **AI-Generated Flashcards for Knowledge Retention**





A close-up photograph of a hand holding a set of keys. The hand is positioned above an open palm, suggesting a transfer or offering. The background is blurred, showing a person in a dark blue long-sleeved shirt. The overall scene is set against a soft, pinkish-purple gradient background.

Responsible use,  
ethics and security

# Risks

---

1. Leakage of input info
2. Output of inappropriate/  
inaccurate  
information



# The Importance of Ethical and Safe Use of AI

- **Data Privacy & Compliance:** GDPR, DPA– Know how AI tools store data.
- **Bias & Ethics:** AI can reflect biases; always review AI-generated decisions.
- **Cybersecurity Risks:** AI can be used for phishing & deepfakes
- **Human Oversight:** AI should assist, not replace, human decision-making.



# In short...

- AI can streamline operations, enhance the teaching learning assessment process
- Security & ethical use **must** be a priority



# Best Practices and Tips

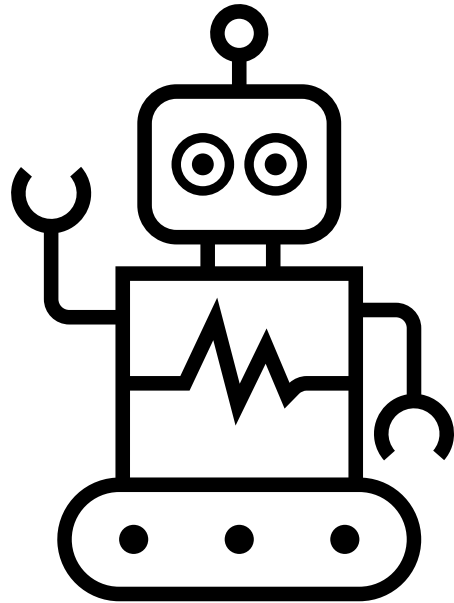
A graphic illustrating the 80/20 rule. It features the number '80' in a large, bold, black serif font, and the number '20' in a smaller, bold, orange sans-serif font. A thick black diagonal line runs from the bottom left to the top right, passing through the middle of the '80' and the top of the '20', visually separating the two numbers and representing the 80/20 ratio.

**80**  
**20**

Demo Time!

---





AI =

**Assistants-not replacements!**

---

# Practical steps for using AI in Apprenticeships

- Start small – Identify one area AI can improve.
- Choose trusted AI tools with clear security policies such as Microsoft Copilot, Chat GPT, Google Gemini
- Ensure regular review of AI decisions for bias, fairness & accuracy (we are still in charge!)
- **AI Use Policy for your organisation:** Ensure *all* users follow internal guidelines on AI use, aligned with awarding body expectations
- Develop AI literacy among staff through training!



# Final Thoughts:

---

## *AI is here to stay*

— we need to find a way to use it safely and ethically so it can enhance the way our teams and learners work and thrive



# Thank you



@PandaEducationandTraining



/panda-education-training



@PandaEduLtd

<https://pandaeducation.co.uk>

[hello@pandaeducation.co.uk](mailto:hello@pandaeducation.co.uk)

Link to resources:



<https://bit.ly/PANDAAI>